

WARRANTY:
ICE MAKERS - 3 YEARS PARTS AND LABOR
EVAPORATOR - 5 YEARS PARTS AND LABOR
COMPRESSOR - 5 YEARS PARTS

DELTA NG 150 R290 115 V / 60 Hz

SELF-CONTAINED ICE CUBE MACHINE

FEATURES

- ▶ PRODUCES SOLID GOURMET CRYSTAL CLEAR ICE CUBES
- ▶ A3S: ANTI-SCALE SPRAY SYSTEM. ITV PATENTED SPRAY SYSTEM WITH FLEXIBLE NOZZLES THAT AVOID LIMESCALE DEPOSITS WITH SMALL VIBRATIONS
- ▶ STIF: STRONG INOX FRAME. SOLID MACHINE STRUCTURE IN 4 COLUMNS WITH AISI 304 STAINLESS STEEL FRAME
- ▶ STRONGEST DOOR IN THE MARKET. MADE OF STAINLESS STEEL. OPENING AND DAMPING SYSTEM PATENTED BY ITV
- ▶ FRONT VENTILATION CONCEPT: FRONTAL IN-OUT AIR SYSTEM ALLOWS 'BUILT IN' MACHINES
- ▶ CLEANING SWITCH: ALLOWS CIRCULATION OF WATER WITH DESCALING PRODUCT (CALKLIN OR SIMILAR) WITHOUT COOLING
- ▶ "NEVER STOP" MOTOR PUMP DEVELOPED BY ITV. PUMP WITHOUT SEALS, WHICH AVOIDS DETERIORATION IN HARD WATER
- ▶ EASI: EASY ACCESS FOR SERVICE & INSTALLATION. ALL PANELS CAN BE DISASSEMBLED SEPARATELY
- ▶ ON/OFF LIGHTED ROCKER SWITCH IN FRONT PANEL
- ▶ TROPICALIZED MACHINES (T CLASS) / HEIGHT ADJUSTABLE LEGS FROM 105MM TO 155MM



	24 H	70°F/20°C	50°F/10°C	90°F/32°C	70°F/21°C	lbs (Kg)	in (mm)	in (mm)	
DELTA NG 150 A		143 (65)		130 (59)		55 (25)	Width 21.06" (535)	Width 24.02" (610)	DELTA 40gr 1.57" (Ø) x 1.73" (H) 40 (Ø) x 44 mm (H) Average dimensions
DELTA NG 150 W		- (-)		- (-)			Depth 23.43" (595)	Depth 25.99" (660)	
							Height* 31.07" (789)	Height 40.16" (1.020)	

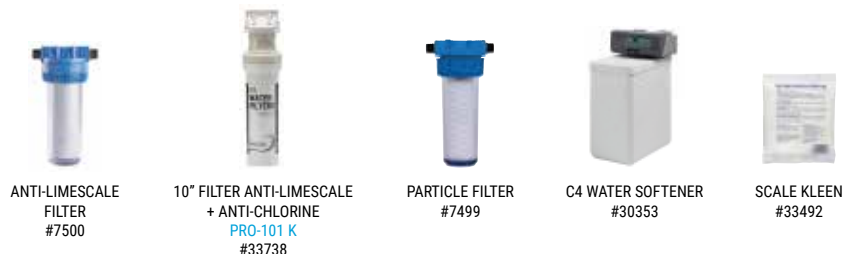
* WITH LEGS 35.20"/44.30"(894/1.125)

ACCESSORIES

INCLUDED



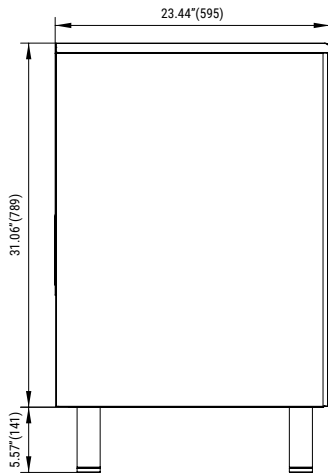
NOT INCLUDED (OPTIONAL)



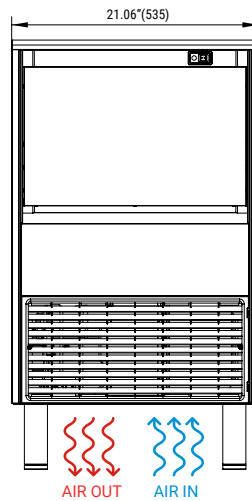
TECHNICAL SCHEME

DELTA NG 150

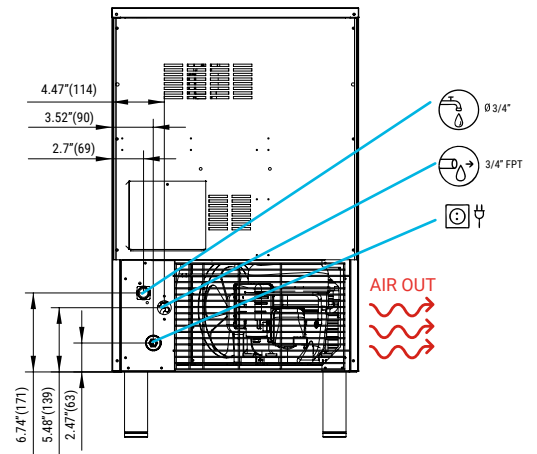
LEFT SIDE VIEW



FRONTAL VIEW



REAR VIEW



* All dimensions in inches (and mm)

OPERATING CONDITIONS

PRODUCTION (LBS) 60Hz

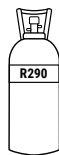
±10% V

41°F/109°F

41°F/95°F

14.5 psi (1 bar) / 87 psi (6 bar)

36 Ice cubes/cycle



V	Hz	ph
115	60	1N



DELTA NG 150 AIR COOLED

°F / °C	50° / 10°	60° / 15°	70° / 21°	86° / 30°
50° / 10°	148	141	139	134
68° / 20°	145	139	137	132
90° / 32°	139	132	130	126
109° / 43°	119	114	112	106



DELTA NG 150 WATER COOLED

°F / °C	50° / 10°	60° / 15°	70° / 21°	86° / 30°
50° / 10°	-	-	-	-
68° / 21°	-	-	-	-
90° / 32°	-	-	-	-
109° / 43°	-	-	-	-

MODELS

DELTA NG 150 A

DELTA NG 150 W

	ASHRAE CONDITIONS (BTU/h)	(W)	(W) 109°F	(AWG/mm ²) (n.)	FUSE	100lbs (Kwh/100 lbs) 90°F / 70°F	gal 100lbs (l/h)	HEAT REJECTED (BTU/h) (W)	(lbs)	(lbs)		
DELTA NG 150 A	4,163	1,220	390	16/1.5	3	10	6.7	31.6 2.6	3,333	889	136	149
DELTA NG 150 W	-	-	-	-	-	-	-	-	-	-	-	-



ITV Ice Makers, Inc.
9550 Satellite Blvd, Suite 100
Orlando, FL 32837
Phone: 1 407 826 1860 | Fax: 1 407 826 1861
Toll Free: 1 888 488 1423
sales@itvice.com | www.itvice.com

SERVICE
service@itvice.com
Skype: service@itvice.com
PHONE: +1 888 488 1423
FROM 8AM TO 5PM EST

WARRANTY:
ICE MAKERS - 3 YEARS PARTS AND LABOR
EVAPORATOR - 5 YEARS PARTS AND LABOR
COMPRESSOR - 5 YEARS PARTS

